

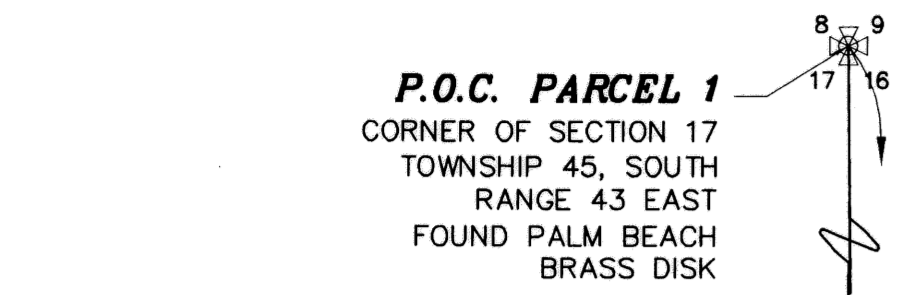
CANTERBURY AT QUANTUM VILLAGE

A REPLAT OF

LOT 88, AND A PORTION OF LOTS 83, 84, 86, 87 AND 89B, 'QUANTUM PARK AT BOYNTON BEACH, P.I.D. PLAT NO. 8', ACCORDING TO THE PLAT THEREOF AS RECORDED IN PLAT BOOK 57, PAGES 196 AND 197, PUBLIC RECORDS OF PALM BEACH COUNTY LYING IN SECTIONS 16 & 17, TOWNSHIP 45 SOUTH, RANGE 43 EAST, CITY OF BOYNTON BEACH, PALM BEACH COUNTY, STATE OF FLORIDA

FEBRUARY 2003 SHEET 4 OF 4

This instrument prepared by:
Robert W. Jackson Jr., PSM
Florida Registration Number LS 4158
Calvin, Giordano & Associates, Inc.
Engineers Surveyors Planners
1800 Eller Drive - Suite 600
Ft. Lauderdale, Florida 33316
954.921.7781 954.921.8807 fax
Certificate of Authorization No. 6791
February, 2003



TRACT	SQUARE FEET	ACRES
TRACT 1	507	0.012
TRACT 2	763	0.018
TRACT 3	832	0.019
TRACT 4	746	0.017
TRACT 5	1,195	0.027
TRACT 6	1,075	0.025
TRACT 7	1,401	0.032
TRACT 8	7,136	0.164
TRACT 9	768	0.018
TRACT 10	1,840	0.042
TRACT 11	618	0.014
TRACT 12	618	0.014
TRACT 13	1,000	0.023
TRACT 14	562	0.013
TRACT 15	1,680	0.039
TRACT 16	1,708	0.039
TRACT 17	1,977	0.045
TRACT 18	887	0.020
TRACT 19	7,141	0.164
TRACT 20	776	0.018
TRACT 21	280	0.006
TRACT 22	308	0.007
TRACT 23	727	0.017
TRACT 24	1,138	0.026
TRACT 25	752	0.017
TRACT 26	638	0.015
TRACT 27*	7,540	0.173
TRACT 28	936	0.021
TRACT 29	620	0.014
TRACT 30	1,026	0.024
TRACT 31	1,557	0.036
TRACT 32	4,980	0.114
TRACT 33	1,918	0.044
TRACT 34	565	0.013
TRACT 35	619	0.014
TRACT R-1	196,771	4.517
TRACT R-2	61,682	1.416
TRACT B-1	24,703	0.567
TRACT B-2	25,905	0.596
TRACT B-3	33,378	0.766
RESIDENTIAL	228,152	6.615
TOTAL	679,884	15.608

*TRACT 27 IS INCLUDED IN TRACT B-2

W 1/4 CORNER SECTION 16
FOUND PALM BEACH
BRASS DISK

CURVE TABLE

CURVE	LENGTH	RADIUS	CENTRAL ANGLE	CHORD	CHORD DIRECTION
C41	8.29'	30.00'	15°49'50"	8.26'	S61°02'43"W
C42	5.06'	24.00'	12°04'49"	5.05'	S46°18'05"E
C43	5.27'	30.00'	10°04'10"	5.27'	N26°04'27"W
C44	5.27'	30.00'	10°04'10"	5.27'	N26°04'27"E
C45	5.54'	30.00'	10°35'21"	5.54'	S25°48'52"E
C46	33.79'	168.00'	11°31'30"	33.74'	N06°16'56"E
C47	4.83'	24.00'	11°31'30"	4.82'	N06°16'56"E
C48	3.62'	18.00'	11°31'30"	3.61'	N06°16'56"E
C49	1.61'	8.00'	11°31'30"	1.61'	N06°16'56"E
C50	7.98'	13.00'	35°10'33"	7.86'	S37°44'51"E
C51	7.98'	13.00'	35°10'33"	7.86'	S61°50'13"W
C52	3.73'	13.00'	16°27'23"	3.72'	S81°46'18"E
C53	14.40'	11.00'	74°59'39"	13.39'	N37°29'49"E
C54	15.61'	11.00'	81°17'07"	14.33'	N40°38'33"W
C55	8.29'	30.00'	15°49'50"	8.26'	N28°57'17"E
C56	40.84'	26.00'	90°00'00"	36.77'	S45°00'00"W
C57	19.31'	30.00'	36°52'12"	18.97'	S18°26'06"W
C58	8.02'	30.00'	15°18'38"	7.99'	S29°12'52"W
C59	39.18'	22.00'	102°02'41"	34.21'	S38°58'40"E
C60	24.89'	14.06'	101°26'49"	21.77'	S38°58'40"E
C61	57.03'	31.94'	102°17'47"	49.75'	S38°58'40"E
C62	13.11'	13.00'	57°47'45"	12.56'	S28°53'52"E
C63	15.94'	11.00'	83°02'17"	14.58'	S48°28'51"W
C64	17.35'	38.00'	26°09'42"	17.20'	N76°55'09"W
C65	125.85'	152.00'	47°26'17"	122.28'	N40°07'09"W
C66	117.57'	142.00'	47°26'17"	114.24'	N40°07'09"W
C67	62.83'	40.00'	90°00'00"	56.57'	N28°35'59"E
C68	34.56'	22.00'	90°00'00"	31.11'	N28°35'59"E
C69	47.12'	30.00'	90°00'00"	42.43'	N28°35'59"E
C70	13.17'	46.00'	16°24'01"	13.12'	N81°47'59"E
C71	16.03'	56.00'	16°24'01"	15.97'	N81°47'59"E
C72	10.88'	38.00'	16°24'01"	10.84'	N81°47'59"E
C73	21.18'	74.00'	16°24'01"	21.11'	N81°47'59"E
C74	14.88'	52.00'	16°24'01"	14.83'	N81°47'59"E
C75	9.59'	21.00'	26°09'42"	9.51'	N76°55'09"W

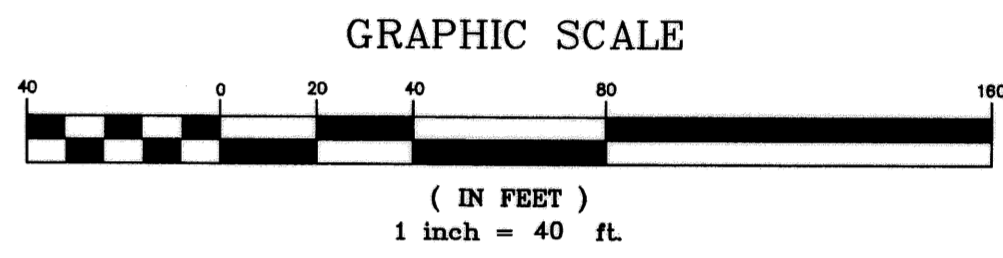
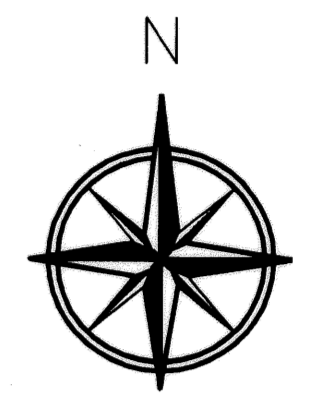
P.O.B. LESS OUT
NORTHEAST CORNER OF LOT 89-A
QUANTUM PARK AT BOYNTON BEACH,
P.I.D. PLAT NO.8
(P.B. 57, PGS. 196-197, P.B.C.R.)

NORTH LINE OF THE S 1/2 OF N.W. 1/4 OF SECTION 16-45-43

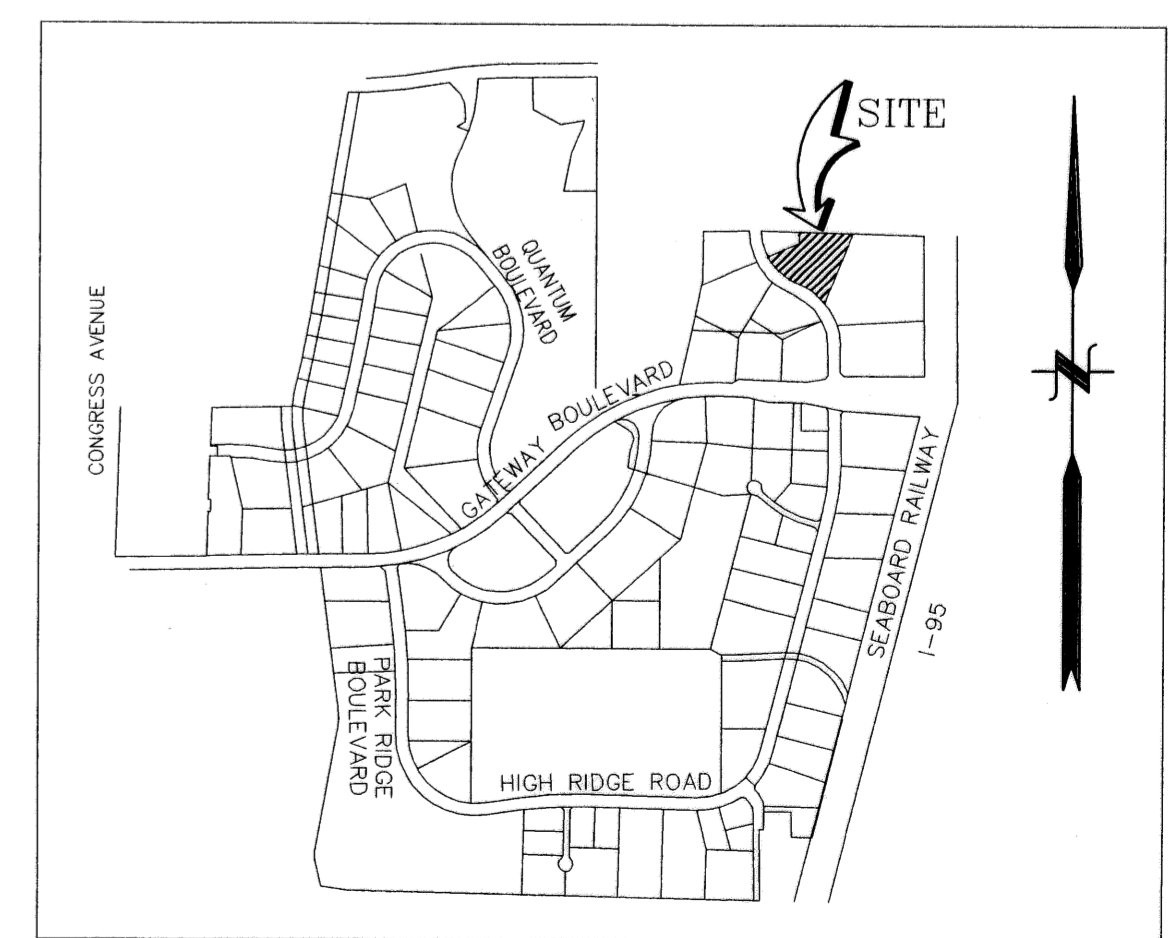
LOT 89-A
REMAINDER OF LOT 89-B

HIGH RIDGE ROAD

HIGH RIDGE ROAD



- LEGEND**
- (B) = BLOCK NUMBER
 - (L) = LOT NUMBER
 - 2502 = ADDRESS NUMBER
 - B.C.R. = BROWARD COUNTY RECORDS
 - C = CENTER LINE
 - C = CHORD LENGTH
 - CA = CENTRAL ANGLE
 - CB = CHORD BEARING
 - D.E. = DRAINAGE EASEMENT
 - D.C.R. = DADE COUNTY RECORDS
 - F.P. & L. = FLORIDA POWER & LIGHT
 - L.M.E. = LAKE MAINTENANCE EASEMENT
 - L = LENGTH OF CURVE
 - (V) = NON-VEHICULAR ACCESS LINE
 - (NR) = NON-RADIAL LINE
 - O.R.B. = OFFICIAL RECORDS BOOK
 - P.B.C.R. = PALM BEACH COUNTY RECORDS
 - P.B. = PLAT BOOK
 - PG. = PAGE
 - PRM = PERMANENT REFERENCE MONUMENT
 - 4"x4" = 4"x4" CONCRETE MONUMENT LB #6791
 - PCP = PERMANENT CONTROL POINT
 - P.O.B. = POINT OF BEGINNING
 - P.O.C. = POINT OF COMMENCEMENT
 - R = RADIUS
 - S.B. = SOUTHERN BELL
 - S.F. = SQUARE FEET
 - U.E. = UTILITY EASEMENT
 - Q.C. = QUANTUM COMMUNICATIONS, INC.
 - P.L.S. = PROFESSIONAL LAND SURVEYOR
 - I.R. = IRON ROD
 - L.B. = LAND SURVEYING BUSSINES
 - WSE = WATER & SEWER EASEMENT



LOCATION MAP
NOT TO SCALE

P:\PROJECTS\2002\022544 QUANTUM VILLAGE AT BOYNTON BEACH\SURVEY\PLAT\CANTERBURY AT QUANTUM VILLAGE 18.DWG SH-4 07-10-2003